



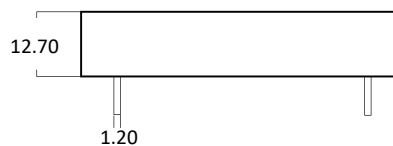
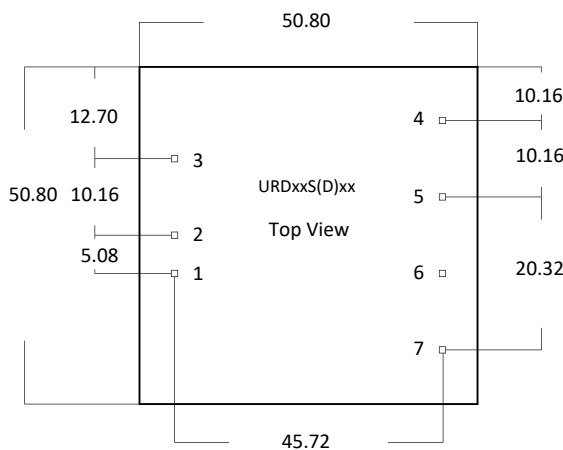
- 4:1 Voltage Input Range
- Both Metal Case and Plastic Case Available
- MTBF: 2.000.000 Calculated Hours
- Single or Dual Output
- Up 6000V Isolation Available

Electrical Shortform Specifications

Electrical Specification	Input Voltage:	See Product Chart Page 2
	Output Voltage (Vout):	See Product Chart Page 2
	Switch Frequency:	150kHz to 200kHz
	Ripple & Noise:	Max. 50mVp-p
	Efficiency:	Up to 85%
	Output Load Efficiency:	≤ ±1% (0% to 100% Load)
	TEMP. Coefficient:	≤ ±0.02% °C (Celsius)
	MTBF:	2.000.000 Hours
Protection (Auto Recovery)	Isolation I/O:	1000V / 0.5mA for 1min (Up to 6000V Isolation Available)
	Short Circuit Protection:	Short Circuit (1sec)
	Over Load Protection:	Yes
	Over TEMP. Protection:	Yes
Certifications & EMC	Approvals:	CE / RoHS
	EMC	EN61000
Environmental	Operating TEMP.:	-45°C to +85°C
	Storage TEMP.:	-45°C to +125°C
	Cooling:	Natural Cooling
Dimension & Material	Case Material:	Metal
	Case Size (L x W x H):	50.80 x 50.80 x 12.70mm
	Weight:	51g (±0.5)
	Soldering Temperature:	≤10sec 300°C Max.

Note - Non Load Operation for a Long time is Not Recommended
For Complete Datasheet/Specification and Drawing Please Contact Power Outlet

Drawing & Measurements: mm



URDxxSxx = Single Output (6-pin)

Pin	Function
1	Vin
2	GND
3	CNT
4	TRM
5	0V
6	+Vout

URDxxDxx = Dual Output (7-pin)

Pin	Function
1	Vin
2	GND
3	CNT
4	TRM
5	-Vout
6	COM
7	+Vout

Product Chart

Model	Input Voltage (Vdc)	Output Voltage (Vout)	Load Current (mA)	Efficiency (%)	Ripple & Noise (mVp-p Max.)
URD12S05 30W	12Vdc (9-36Vdc)	5	6000	83	50
URD12S12 30W		12	2500	86	50
URD12S15 30W		15	2000	88	50
URD12S24 30W		24	1250	83	50
URD24S05 30W	24Vdc (18-72Vdc)	5	6000	83	50
URD24S12 30W		12	2500	86	50
URD24S15 30W		15	2000	88	50
URD24S24 30W		24	1250	83	50
URD12D3.3 30W	12Vdc (9-36Vdc)	±3.3	±4550	82	50
URD12D05 30W		±5	±3000	83	50
URD12D12 30W		±12	±1250	86	50
URD12D15 30W		±15	±1000	88	50
URD12D24 30W		±24	±625	83	50
URD24D3.3 30W	24Vdc (18-72Vdc)	±3.3	±4550	82	50
URD24D05 30W		±5	±3000	83	50
URD24D12 30W		±12	±1250	86	50
URD24D15 30W		±15	±1000	88	50
URD24D24 30W		±24	±625	83	50

* For 3000V Isolation add Suffix "H3", 4000V Isolation "H4", 6000V Isolation "H6" (URDxxS(D)xxHx xxW)